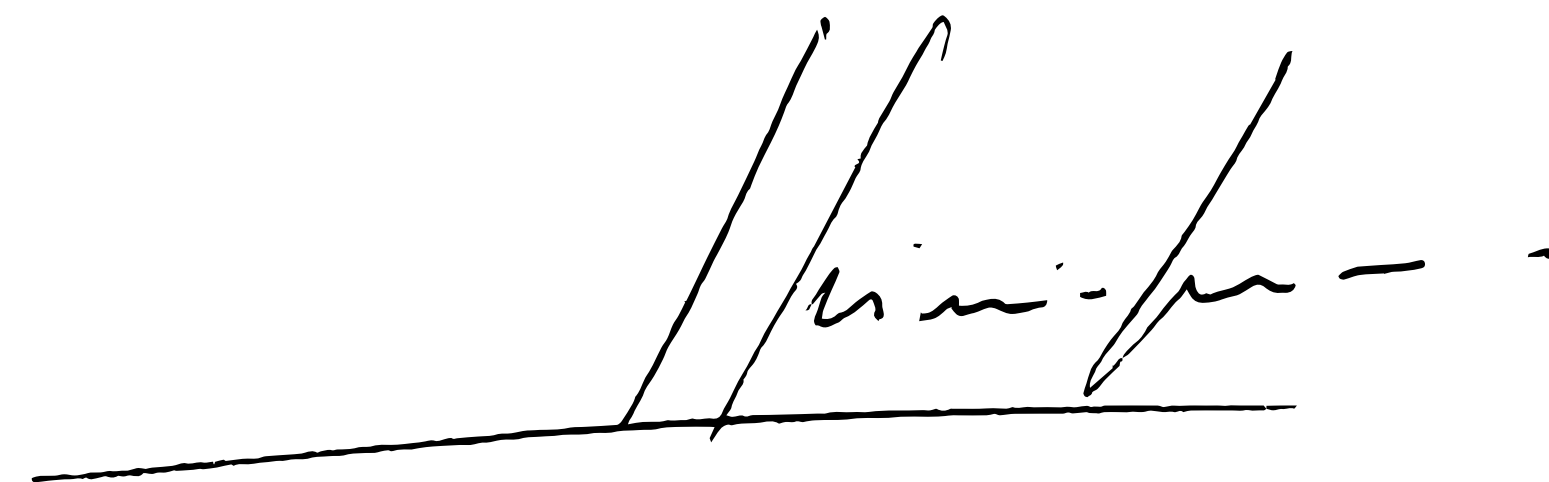




*pininfarina*  
CLASSICHE

**“ It’s essential to preserve our heritage  
by making it part of our future „**

Sergio Pininfarina

A handwritten signature in black ink, appearing to read 'Pininfarina', is positioned above a long, thin horizontal line that extends across the width of the signature.

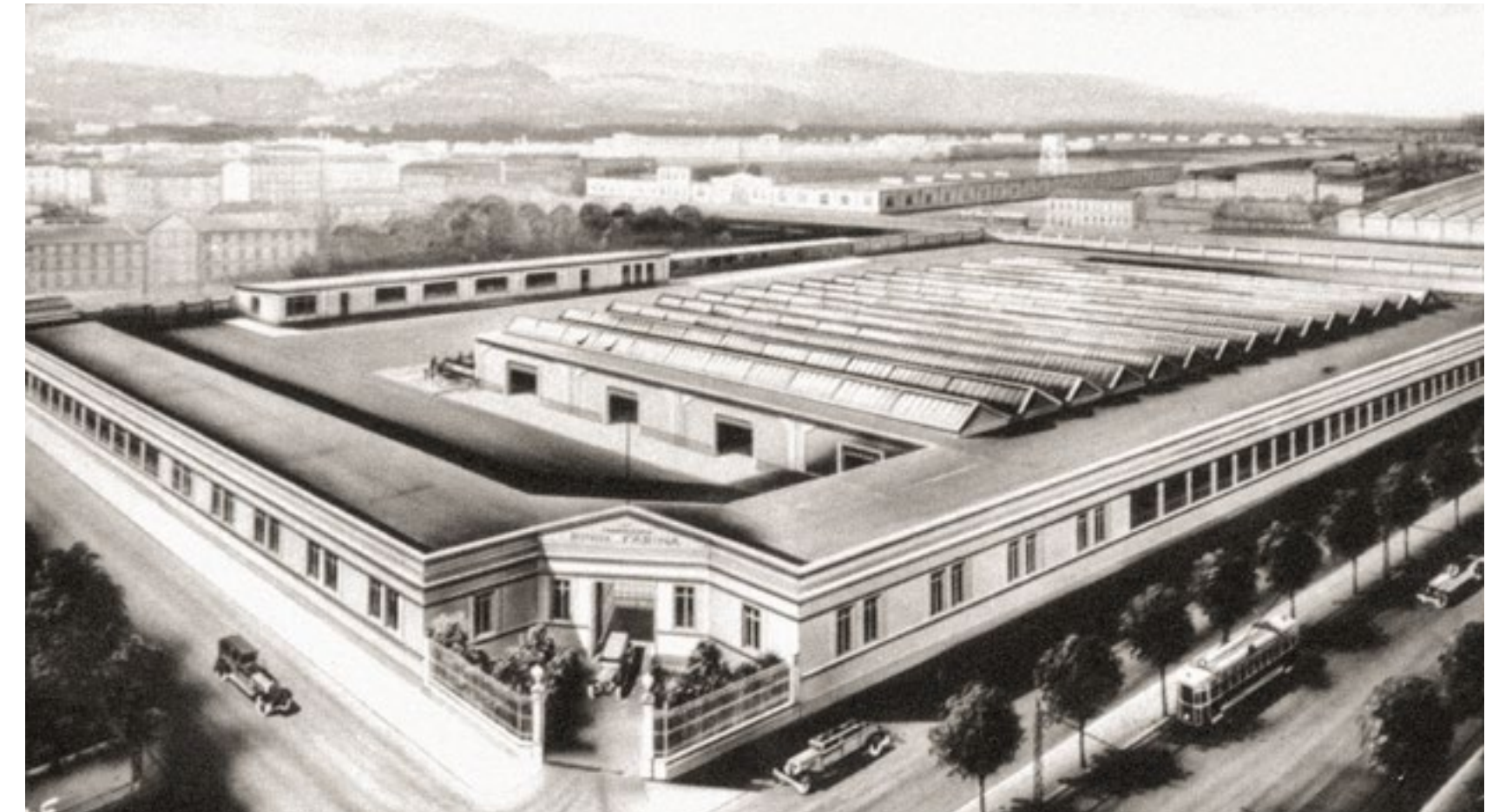


# HOW THE STORY BEGAN

## *Legendary*

It started with a dream born in Italy more than nine decades ago by a visionary man Battista Farina, with the desire to create beauty. The story of a singular obsession, an enduring passion, a family tradition, this is the story of Pininfarina where tradition inspires innovation and a visionary style shapes the future.

Since its foundation year in 1930, Pininfarina has designed some of the most iconic cars with their elegant design that has made the history of automotive.





# AN ICON OF BEAUTY

*timeless*

Pininfarina embodies the values of purity, elegance and innovation. With its timeless design, it has shaped some of the most iconic cars. The Cisitalia, the Lancia Aurelia B24, the most iconic Ferraris represent the history of Pininfarina and made the brand Pininfarina famous across the world, embodying the Italian Style.





# THE PININFARINA HERITAGE

*priceless*

Pininfarina values its past and heritage, which have contributed to the history of the automotive sector.

Our archive, together with the Pininfarina collection, represents Pininfarina's rich historical legacy, offering access to unique materials. The restoration of the archive gave birth to Pininfarina Classiche, which aims to certify some of the most iconic cars designed and manufactured by Pininfarina.







*pininfarina*  
CLASSICHE

# TIMELESS BEAUTY, NOW CERTIFIED

PININFARINA CLASSICHE IS A CERTIFICATION PROGRAM  
DEDICATED TO CLASSIC CARS THAT WERE CRAFTED IN OUR FACILITIES  
FOR VARIOUS BRANDS THROUGHOUT THE YEARS.





# DESCRIPTION OF THE PROGRAM

Our new service stems from the initiative to make the Pininfarina historical archive available to car owners and collectors.

The Pininfarina Classiche certification is a declaration related to the following production specifications:

- chassis number
- market of destination
- model and type code
- exterior color
- interior finishing
- car mats
- date of exit from Pininfarina facilities
- other available information  
(engine number, body number, soft top, etc.)





# FIRST ON THE SCENE

During the **initial phase**, the declaration will mainly be issued  
for the following models:



**Alfa Romeo Spider (Duetto)**

for production years from 1966 to 1993



**Fiat 124 Spider**

for production years from 1966 to 1982



**Pininfarina Spider Europa and Volumex**

for production years from 1982 to 1985





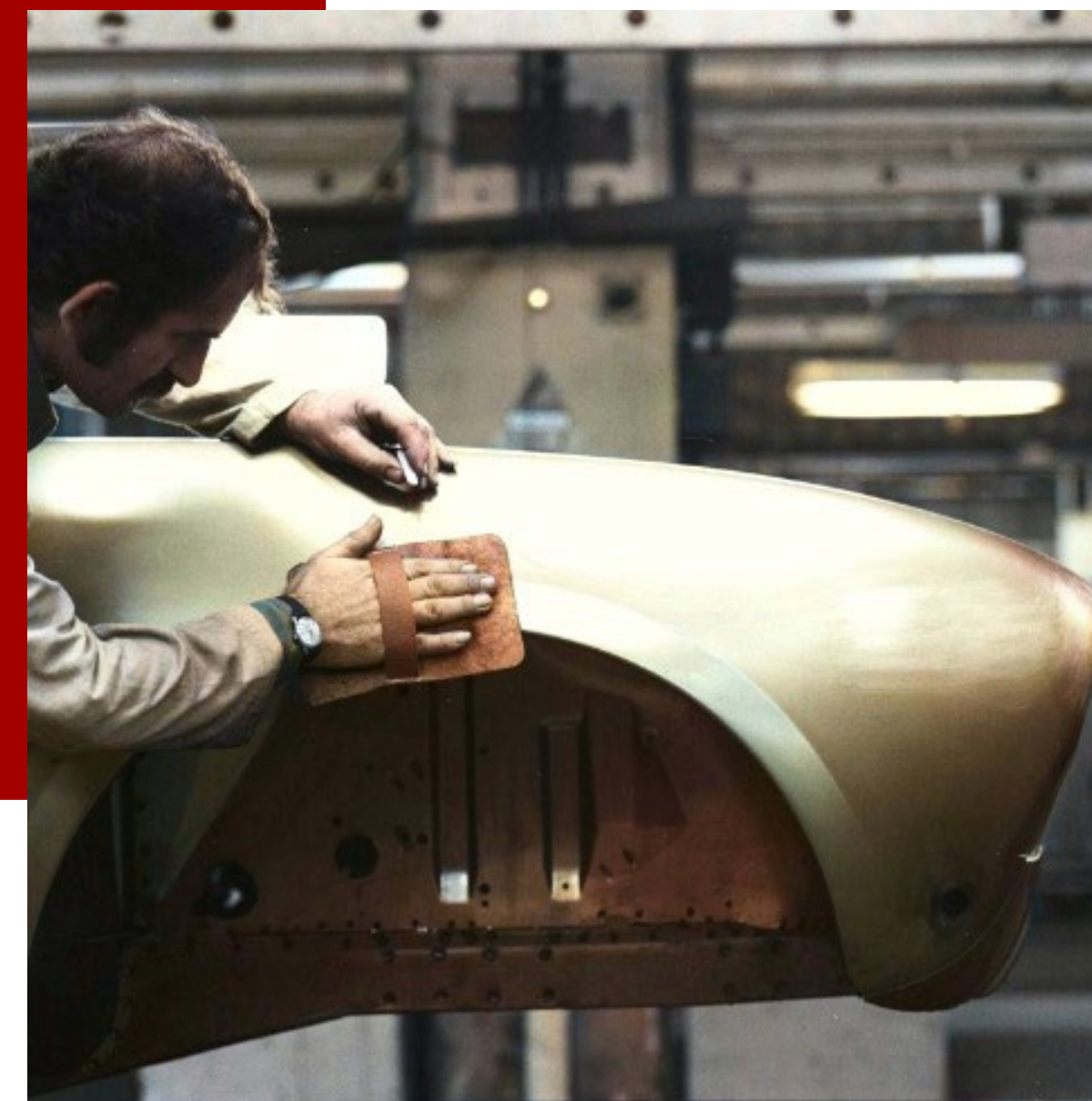
PHOTOS FROM PININFARINA ARCHIVE







PHOTOS FROM PININFARINA ARCHIVE





# COMING SOON

In the future the declaration will be issued for **many other brands and models.**





# HOW TO REQUEST THE DECLARATION

1. Send an e-mail to **classiche@pininfarina.it** with the following information about the vehicle: model, chassis number, registration date (if known).
2. Receive confirmation of the presence of the data for the issuance of the declaration in the Pininfarina historical archive (approximately within 2 working days).
3. After data confirmation, Pininfarina will send a form to be filled out by the Customer. The form will also contain the necessary information for payment via bank transfer.
4. Pininfarina will send the digital scan of the declaration via email and send the original by courier within 5 working days after receiving the payment.

*pininfarina*  
WE MOVE DREAMS

DICHIARAZIONE DI  
SPECIFICHE DI PRODUZIONE  
DECLARATION OF  
PRODUCTION SPECIFICATIONS

Si dichiara che dai registri di produzione conservati presso l'Archivio Storico Pininfarina il veicolo menzionato di seguito risulta prodotto con le seguenti caratteristiche:  
*Declares that from the production records kept in the Pininfarina Historical Archive the below mentioned vehicle has been produced with the following characteristics:*

TELAIO / CHASSIS	05502560
MODELLO / MODEL	124 Spider Europa Volumex
CODICE TIPO / TYPE CODE	124 DS0
MERCATO DI DESTINAZIONE / MARKET OF DESTINATION	Italia
COLORE ESTERNO / EXTERIOR COLOUR	Nero Metallizzato
FINIZIONE INTERNI / INTERIOR FINISHING	Beige
TAPPETI / CAR MATS	Marrone
DATA DI USCITA DAGLI STABILIMENTI PININFARINA / DATE OF EXIT FROM PININFARINA FACILITIES	08.03.1984
NOTE	Nº motore / engine 01440007, capote beige

Procuratore / Legal Representative



# PININFARINA CLASSICHE DECLARATION PRICE LIST

VALID THROUGH MARCH 31, 2024

	PRICE INCLUDING VAT
vehicles produced after 1980	€300,00
vehicles produced before 1980	€400,00

The listed prices are applicable exclusively to the three brands and models mentioned on page 8. Any inquiries regarding other brands will be assessed on an individual basis.

The price includes shipping costs for declarations sent within Italy.

For all shipments to destinations outside Italy, the price list will be supplemented with courier shipping fees\*. The following cost ranges are provided as an indication:

- Europe: €16 -18
- North America: €16 - 18
- South America: €20 - 22
- Australia: €21 - 23
- Asia: €20 - 22
- Other geographical areas: evaluated case by case

*\*the exact amount will be calculated prior to the shipment and included in the total price to be paid*



If you wish to enrich the historical documentation  
of your Pininfarina car, please contact us to learn more.

**CLASSICHE@PININFARINA.IT**

[www.pininfarina.it](http://www.pininfarina.it)